

# Jerrabomberra Pump Track Consultation Report

## Workshops and Your Voice page

We held three workshops at the Jerrabomberra Community Centre on 14, 15 and 17 February with 69 people participants in total. Following the workshops, a digital survey and a mapping tool were opened on Your Voice.

There were 445 visitors to the Jerrabomberra Pump Track information page, with 212 people visiting multiple pages and/or downloading a document. Of those, 39 contributors dropped a 'pin' using the map tool and 38 contributors completed the survey. Two submissions were also received by email.

## Essential and Desirable Criteria

A number essential and desirable criteria were provided by community participants. The essential criteria were:

- As far from residents/ homes as possible – 250-500m
- Designated car parking – not street parking
- Accessible – easy to get to by bike/walking tracks
- Central location – close to people, not remote
- Toilets
- Protection of natural environment
- Not near competing resources
- Away from busy roads or fast roads
- Close to schools
- Located in Jerrabomberra
- Not visible from front yards
- Visible – easy to see
- Not near waterways
- Avoids stormwater drains or catchments
- Integrated with existing facilities
- Does not degrade an existing sporting facility
- No obstruction of existing paths/ walkways
- Disability access
- Not on high ground
- No removal of trees
- Close to Jerra Lake
- No public toilet near houses
- Lights
- Daylight use only
- Safety and security for residents (anti-social behaviour)
- Security of track
- Drinking water
- Seating
- Bins – rubbish collection
- Shade
- Signage

## JERRABOMBERRA PUMP TRACK **CONSULTATION REPORT**

---

- Fun for kids
- Comes in under budget, regardless of site
- Completed by December 2024
- Fully compliant with grant terms
- Achievable/Doable
- Maintenance
- Safe for kids.

The desirable criteria identified were:

- Skatepark nearby
- Maximise grant options – size
- Complement other tracks bike and walking
- Site that is underutilised
- Area where kids naturally gravitate
- Close to shops
- Potential for expansion
- Safety consideration for users
- Bike repair station
- Fence
- Link to Indigenous culture
- Use Council opportunities to enhance/add value
- BBQ.

Many of the essential and desirable criteria can be considered or included in the construction of the pump track, while others can be used to compare locations.

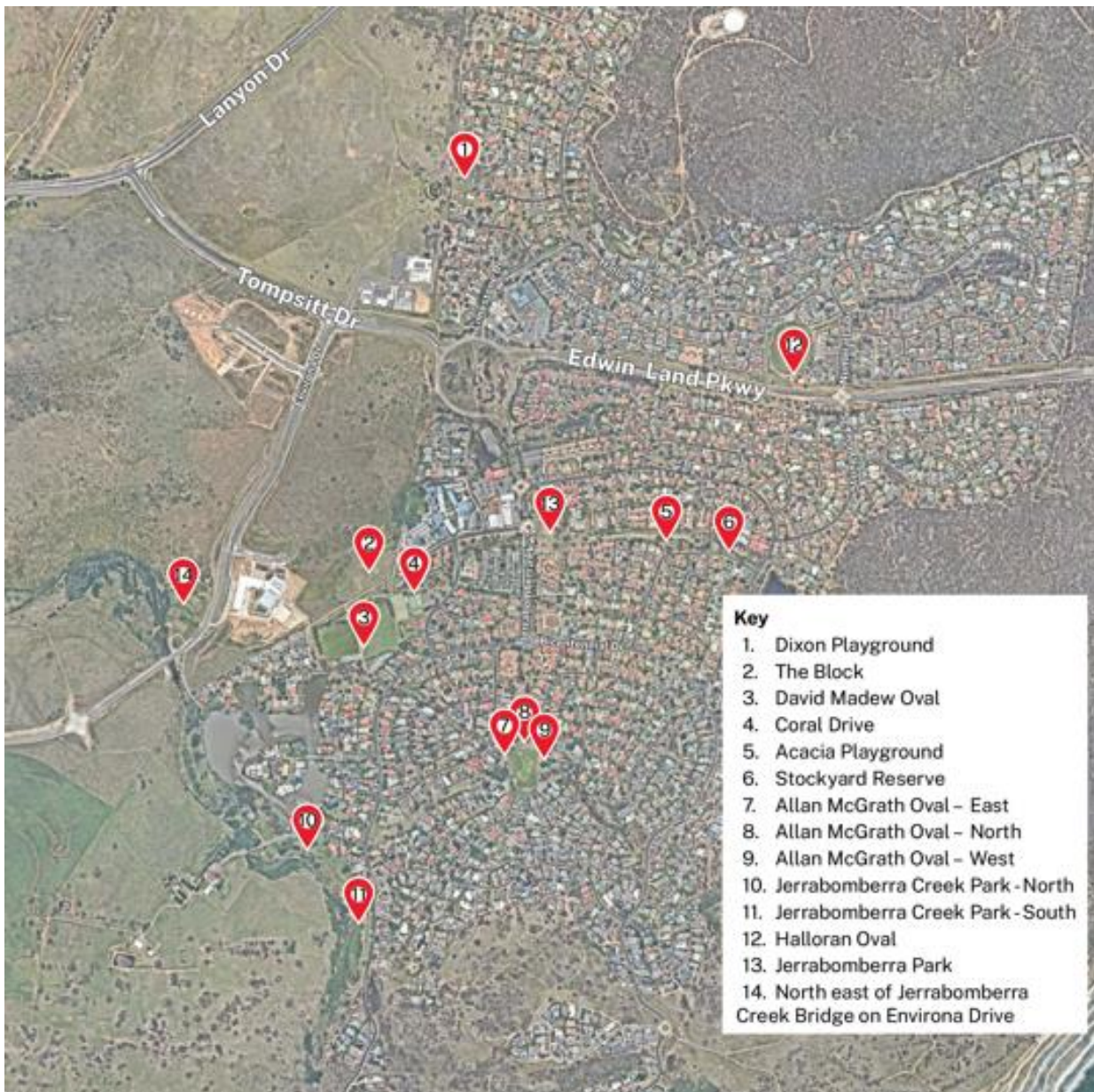
Council staff have some additional essential criteria, including that:

- the property is Council-owned land
- underground infrastructure (water, sewer, stormwater) will not be impacted by the project
- significant trees or environmental reserves are not damaged.

### **Location suggestions**

At the workshops and through the Your Voice page, the community suggested 14 locations for the pump track. These are:

- Allan McGrath Reserve – Oval
- Allan McGrath Reserve – North
- David Madew Oval
- Halloran Drive Oval
- Jerrabomberra Creek Park – Waterfall Drive
- Jerrabomberra Creek Park – Mariners Court
- Jerrabomberra Park / Stockyard Reserve
- Acacia Drive Playground / Stockyard Creek Park
- Coral Drive (near Tennis & Basketball Courts)
- Dixon Playground/Esmond Avenue
- The Block (space used as school play area at end of Coachwood Ave)
- North-east of Jerrabomberra Creek Bridge on Environa Drive.



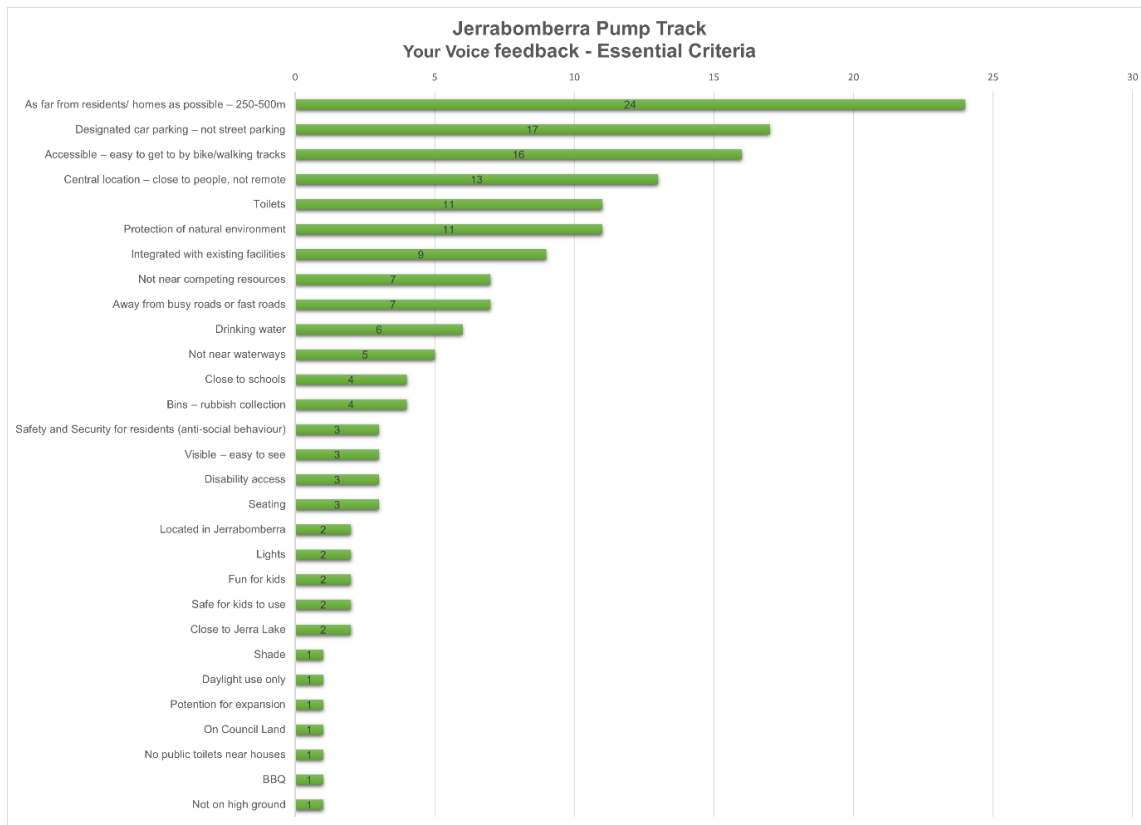
### Ranking essential criteria

It is not possible to rank the essential criteria by importance through the workshops, but through feedback received on the digital survey on Your Voice, we can compare the number of times essential criteria were repeated in the open-text responses. Not all criteria raised during workshops were raised in the digital survey.

This allows us to rank the top criteria (anything mentioned more than 10 times) as follows:

1. As far from residents/ homes as possible – 250-500m – mentioned 24 times
2. Designated car parking – not street parking – mentioned 17 times
3. Accessible – easy to get to by bike/walking tracks – mentioned 16 times
4. Central location – close to people, not remote – mentioned 13 times
5. Toilets – mentioned 11 times
6. Protection of natural environment – mentioned 11 times

# JERRABOMBERRA PUMP TRACK CONSULTATION REPORT



Some essential criteria raised are about the design of the track, rather than the proposed location. Another two, that is the 'safety and security for residents' and the 'security of the track' are considered open for interpretation and not necessarily about a specific location.

## Comparing proposed locations

### Essential criteria

From the community

- ✓ Meets criteria
- ✗ Does not meet criteria
- Caveats to meeting this criteria

	Allan McGrath Reserve - Oval	David Madew Oval	Jerrabomberra Park / Stockyard Reserve	Allan McGrath Reserve - North	Halloran Drive Oval	Jerrabomberra Creek Park – Waterfall Drive	Jerrabomberra Creek Park – Mariners Court	Acacia Drive Playground	Coral Drive (near Tennis & Basketball Courts)	Dixon Playground, Esmond Avenue
As far from residents/ homes as possible – 250-500m	✗	-	✗	✗	-	✗	✗	✗	✗	✗
Designated car parking – not street parking	-	✓	-	-	-	✗	✗	✗	✓	✗
Accessible – easy to get to by bike/walking tracks	✓	✓	✓	✓	-	✓	✓	✓	✓	✓
Central location – close to people, not remote	✓	✓	✓	✓	✓	✓	✓	✓	✓	✓
Toilets	✓	✓	✗	✓	✓	✗	✗	✗	-	✗
Protection of natural environment	✓	✓	✓	-	✓	-	-	-	-	✗
Not near competing resources	-	✓	✓	✓	✓	✓	✓	✓	✓	✓
Away from busy roads or fast roads	✓	✓	✗	✓	✗	✗	✗	✓	✓	✓
Close to schools	✓	✓	✓	✓	✗	✓	✓	✓	✓	✗
Located in Jerrabomberra	✓	✓	✓	✓	✓	✓	✓	✓	✓	✓
Not visible from front yards	✗	✗	✗	✗	✗	✗	✗	✗	✗	✗
Visible – easy to see	✓	✓	✓	✓	✓	✓	✓	✓	✓	✓

# JERRABOMBERRA PUMP TRACK CONSULTATION REPORT

## Essential criteria

From the community

- ✓ Meets criteria
- ✗ Does not meet criteria
- Caveats to meeting this criteria

	Allan McGrath Reserve - Oval	David Madew Oval	Jerrabomberra Park / Stockyard Reserve	Allan McGrath Reserve - North	Halloran Drive Oval	Jerrabomberra Creek Park – Waterfall Drive	Jerrabomberra Creek Park – Mariners Court	Acacia Drive Playground	Coral Drive (near Tennis & Basketball Courts)	Dixon Playground, Esmond Avenue
Not near waterways	✓	✓	✓	✓	✓	✗	✗	✓	✓	✓
Avoids stormwater drains or catchments	✓	-	-	✓	✓	✓	✓	✗	✓	✗
Integrated with existing facilities	-	-	✓	✓	✓	✓	✓	✓	✓	✓
Does not degrade an existing sporting facility	-	-	✓	✓	✓	✓	✓	✓	✓	✓
No obstruction of existing paths/ walkways	✓	✓	✓	✓	✓	✓	✓	✓	✓	✓
Disability access	✓	✓	✓	✓	✗	✓	✓	✓	✓	✗
Not on high ground	✓	✓	✓	✓	✓	✓	✓	✓	✓	✓
No removal of trees	✓	✗	-	✗	✗	✓	✓	✗	✗	✗
Close to Jerra Lake	✗	✓	✓	✗	✗	✓	✓	✗	✓	✗
No public toilet near houses	✓	✓	✗	✓	✓	✗	✗	✗	✗	✗
Safety and security for residents (anti-social behaviour)	-	-	-	-	-	-	-	-	-	-
Security of track	-	-	-	-	-	-	-	-	-	-

## Essential criteria

From Council

	Allan McGrath Reserve - Oval	David Madew Oval	Jerrabomberra Park / Stockyard Reserve	Allan McGrath Reserve - North	Halloran Drive Oval	Jerrabomberra Creek Park – Waterfall Drive	Jerrabomberra Creek Park – Mariners Court	Acacia Drive Playground	Coral Drive (near Tennis & Basketball Courts)	Dixon Playground, Esmond Avenue
Council-owned land	✓	✓	✓	✓	✓	✓	✓	✓	✓	✓
No impact on inground infrastructure	✓	-	-	✗	✗	-	✓	✗	✓	✗
No impact to significant trees or environmental reserves	✓	✓	-	✗	✓	✓	✓	✗	✗	✗

## Desirable criteria

From the community

- ✓ Meets criteria
- ✗ Does not meet criteria
- Caveats to meeting this criteria

	Allan McGrath Reserve - Oval	David Madew Oval	Jerrabomberra Park / Stockyard Reserve	Allan McGrath Reserve - North	Halloran Drive Oval	Jerrabomberra Creek Park – Waterfall Drive	Jerrabomberra Creek Park – Mariners Court	Acacia Drive Playground	Coral Drive (near Tennis & Basketball Courts)	Dixon Playground, Esmond Avenue
Skatepark nearby	✗	✓	✗	✗	✗	✗	✗	✗	✓	✗
Maximise grant options - size	✗	✗	✗	✗	✗	✓	✓	✗	✗	✗
Complement other tracks bike and walking	✓	✓	✓	✓	-	✓	✓	✓	✓	✗
Site that is underutilised	✗	✗	✗	✗	✗	✗	✗	✗	✗	✗
Area where kids naturally gravitate	✓	✓	✓	✓	✓	✓	✓	✓	✓	✓
Close to shops	✗	✓	✓	✗	✓	✗	✗	✓	✓	✓
Potential for expansion	✗	✗	✗	✗	✗	✓	✓	✗	✗	✗

Of the 37 criteria, 14 can be considered in the design, rather than being about the proposed location. Another two, that is the 'safety and security for residents' and the 'security of the track' are considered open for interpretation and not necessarily about a specific location.

### Potential sites

Council's essential criteria rules out 'The Block' (space at end of Coachwood Avenue) and northeast of Jerrabomberra Creek Bridge on Environa Drive as these are not owned by Council. Whilst it could be possible to negotiate and acquire land that is not currently Council owned, this would be likely to extend the project beyond the allowed grant time frame.

Council's essential criteria that underground infrastructure (water, sewer, stormwater) and significant trees or environmental reserves will not be impacted rules out Dixon Playground/Esmond Avenue and Coral Drive (near Tennis and Basketball courts), Acacia Drive Playground, Allan McGrath Reserve – North, and Halloran Drive Oval.

This leaves five sites for consideration:

- Jerrabomberra Creek Park – Waterfall Drive
- Jerrabomberra Creek Park – Mariners Court
- Allan McGrath Reserve (Oval)
- David Madew Oval
- Jerrabomberra Park/Stockyard Reserve.

### Review of remaining sites

- **Jerrabomberra Creek Park – Waterfall Drive or Mariners Court**

Both sites meet 14 of the 22 remaining essential criteria; fail to meet 7 criteria; and have caveats on 1 criteria. These sites fail to meet the top two ranked criteria of being as far from residents as possible and having designated parking. The other criteria they fail to meet are having toilets, being away from busy roads or fast roads, not being visible from front yards, not being near a waterway, not having a toilet near houses (if a toilet was to be built).

- **Allan McGrath Reserve (Oval)**

This site meets 15 out of the 22 remaining essential criteria but fails to meet 3 criteria and has caveats on 4 criteria. However, the site has been ruled out by the contractor as unsafe. It is not safe to co-locate the pump track with a cricket pitch.

- **David Madew Oval**

This site meets 16 out of the 22 remaining essential criteria, fails to meet 2 criteria and has caveats on 4 criteria. It has a caveat on the top-ranked criteria of being as far from residents as possible (there are some residents nearby). The two criteria it fails to meet are not being visible from front yards and no removal of trees (some trees may need to be removed and replaced close by – though no large significant trees).

- **Jerrabomberra Park/Stockyard Reserve**

This site meets 14 out of the 22 remaining essential criteria, fails to meet 5 criteria, and has caveats on 3 criteria.

It fails to meet the top criteria of being as far from residents as possible and has a caveat on the second ranked criteria of having designated parking (limited at shops). The other criteria it fails to meet are having toilets available, being away from busy or fast roads, not being visible from front yards, not having a toilet near houses (if a toilet was to be built).

No Council-owned location was considered to meet the top-ranked criteria of being completely away from residents, it is possible that these sites will face opposition from neighbouring residents.

### **Next steps**

The remaining two potential sites for the pump track are David Madew Oval and Jerrabomberra Park/Stockyard Reserve.

If David Madew Oval is chosen as the site, consultation will be required with sporting clubs, particularly the Monaro Panthers and Jerrabomberra Touch. During the soccer season, David Madew Oval is used four nights a week and on Saturdays. The pump track could be seen as complementary for siblings of participants in soccer, however parking is already limited at these times. David Madew Oval was assessed with a caveat for the top-ranked criteria of being as far from residents as possible, because there are residents nearby, however there are smaller numbers of residents than the other locations and they are already located next to busy sporting fields and facilities.

If Jerrabomberra Park/Stockyard Reserve is chosen as the site, consideration should be given to the availability of parking which is limited at the nearby shops and community centre, the site's proximity to Bicentennial Drive as well as the availability of toilets. There is also stormwater infrastructure that needs to be considered.

A drop-in session will be held on Thursday 7 March from 6-7.30pm to provide this feedback to interested residents and receive comments.