



**FOR LEASE**  
**BY EXPRESSION OF INTEREST**  
**256 Crawford Street, Queanbeyan**  
 Centrally located shopfront and office space near the heart of the Queanbeyan CBD and close to parking and public transport.

**FEATURES**

A single storey building with mezzanine level at the rear section. This building was most recently a QPRC Customer Service Centre and Administration building accommodating more than 70 staff in a mostly open plan layout with private offices and large meeting rooms. It was formerly the home of the Queanbeyan Whites Rugby Union Club, demonstrating its flexibility.

- Accessible front entrance
- Front-of-house service counters
- Secure off-street parking
- Upstairs offices or meeting rooms
- Fully carpeted and air conditioned
- Two separate toilet facilities
- Large storeroom
- Rear access to public parking
- Bus stop across the street



Front-of-house service counter



Large open plan areas plus offices



Multiple staff amenities

**INSPECTION BY APPOINTMENT**

Monday to Friday 9am-5pm

Phone: 0409 365 667

Email: michael.goiser@qprc.nsw.gov.au

More information at: [www.qprc.nsw.gov.au/for-lease](http://www.qprc.nsw.gov.au/for-lease)

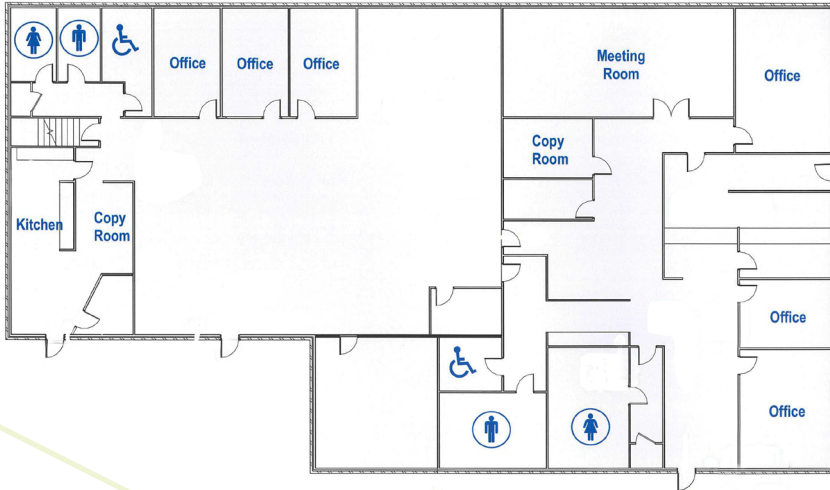


# FLOORPLAN

The building is approximately 570sqm in total, with 455sqm on the ground floor and 115sqm on a mezzanine level. It has direct access for customers from the Crawford Street frontage, as well as rear/side access from secure parking.

The front section of the building comprises a mixture of front-of-house customer service counters, offices, meeting spaces and amenities. The rear of the building is primarily open plan and can be alarmed as a separate zone to the front section.

The rear section has high ceilings and includes offices or meeting rooms upstairs and downstairs, as well as additional amenities.



## SUBMITTING AN EOI

Please complete the Expression of Interest form available on our website at: [www.qprc.nsw.gov.au/for-lease](http://www.qprc.nsw.gov.au/for-lease)

Our intent is to lease this space at commercial market value for a period of up to five years.

Expressions of interest of greater than \$2,500 per week will be considered.